



**NOVAGUASSERO**  
RTR AND THERMOPLASTICS MANUFACTURING

## Applicazioni civili | *Civil works*



### **Nuova Sguassero Srl**

Via E. Fermi, 15 - 33058  
San Giorgio di Nogaro (UD) - I

Ph. +39.0431.666439  
Fax. +39.0431.620570

info@nuovasguassero.it  
www.nuovasguassero.it



# NSGUASSERO

RTR AND THERMOPLASTICS MANUFACTURING

La NSguassero, con la sua ampia gamma di tubazioni in "Filament Winding" e "Filament Winding caricato sabbia", progettate e realizzate in accordo agli standard ISO, EN, ASTM e ANSI AWWA produce condotte a gravità ed in pressione da 4 Bar a 20 Bar e oltre, con classi di rigidità sino a 10.000 N/m<sup>2</sup> e oltre.

I tipi di giunti a disposizione sono i seguenti:

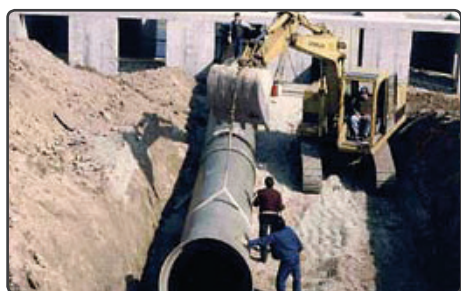
- Maschio-Femmina con doppio O-Ring in elastomero;
- Maschio-Femmina con doppio O-Ring in elastomero e dispositivo antisfilante;
- Manicotto con guarnizione a labbro;
- Flangiato;
- Giunti Meccanici tipo Dresser, Straub e similari.

*NSguassero, with its wide range of "Filament Winding" and "Mortar Filament Winding" piping systems designed and built as per ISO, EN, ASTM Standards, produces gravity and pressure pipelines from 4 Bar to 20 Bar and more, available stiffness classes up to 10.000 N/m<sup>2</sup> and more.*

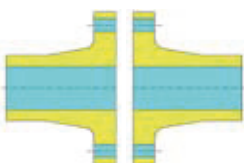
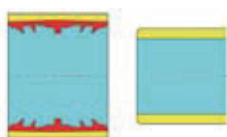
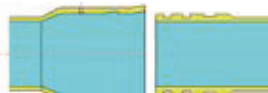
*Available joint types are the following:*

- *Bell & Spigot with double "O-Ring" with or without keylock;*
- *Sleeve Coupling;*
- *Flanges;*
- *Mechanical Couplings (Dresser, Straub, Reka or similar).*

## Applicazioni civili | Civil works



### GIUNTI | JOINTS



### RESINE | RESINS

- Ortoftaliche - Ortophtalic
- isoftaliche - isophtalic
- Vinilesteri - Vinylester

### NORMATIVE | STANDARDS

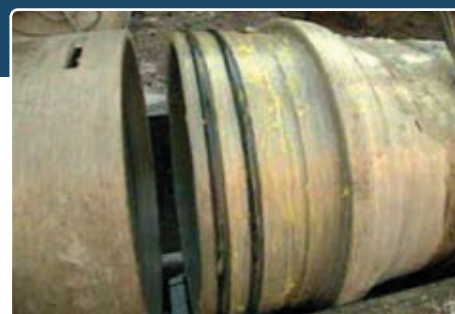
- UNI 9032 - 9033
- AWWA C 950
- ASTM D 2996 - D 3262  
D 3754 - D 3517  
D 2310
- BS 5480

### CERTIFICATI | CERTIFICATES

- KIWA - KOMO  
n° K 4386/95
- KIWA (Potable Water)  
n° K 5147/95
- Factory Mutual
- altri su richiesta - Others upon

### LUNGHEZZE | LENGTHS

- DN ≤ 32 = 4,5 m
- DN ≤ 125 = 6 m
- DN ≤ 150 = 12 m



ND mm	N/m <sup>2</sup>				NP - bar					
	1285	2500	5000	10000	4	6	10	12.5	16	20
25					*	*	*	*	*	*
32					*	*	*	*	*	*
40					*	*	*	*	*	*
50					*	*	*	*	*	*
65					*	*	*	*	*	*
80					*	*	*	*	*	*
100					*	*	*	*	*	*
125					*	*	*	*	*	*
150					*	*	*	*	*	*
200	*	*	*	*	*	*	*	*	*	*
250	*	*	*	*	*	*	*	*	*	*
300	*	*	*	*	*	*	*	*	*	*
350	*	*	*	*	*	*	*	*	*	*
400	*	*	*	*	*	*	*	*	*	*
450	*	*	*	*	*	*	*	*	*	*
500	*	*	*	*	*	*	*	*	*	*
600	*	*	*	*	*	*	*	*	*	*
70	*	*	*	*	*	*	*	*	*	*
800	*	*	*	*	*	*	*	*	*	*
900	*	*	*	*	*	*	*	*	*	*
1000	*	*	*	*	*	*	*	*	*	*
1100	*	*	*	*	*	*	*	*	*	*
1200	*	*	*	*	*	*	*	*	*	*
1300	*	*	*	*	*	*	*	*	*	*
1400	*	*	*	*	*	*	*	*	*	*
1500	*	*	*	*	*	*	*	*	*	*
1600	*	*	*	*	*	*	*	*	*	*
1800	*	*	*	*	*	*	*	*	*	*
2000	*	*	*	*	*	*	*	*	*	*



PROCESS PIPING

**CIVIL WORKS**

MARINE APPLICATIONS

GRP SPECIAL PRODUCTS

REINFORCED THERMOPLASTICS SPECIAL PRODUCTS

### Nuova Sguassero Srl

Via E. Fermi, 15 - 33058 San Giorgio di Nogaro (UD) - I Ph. +39.0431.666439 info@nuovasguassero.it  
 Fax. +39.0431.620570 www.nuovasguassero.it