

FAST LINE

NEW

Telefono ITALIA
800 98 44 74
ITALY

E-mail ESTERO
@ tecnico@fralsrl.eu
FOREIGN COUNTRY



FRAL
GAS REDUCING SOLUTIONS



Fast line
Fast line



Prodotti
Products



Magazzino
Warehouse



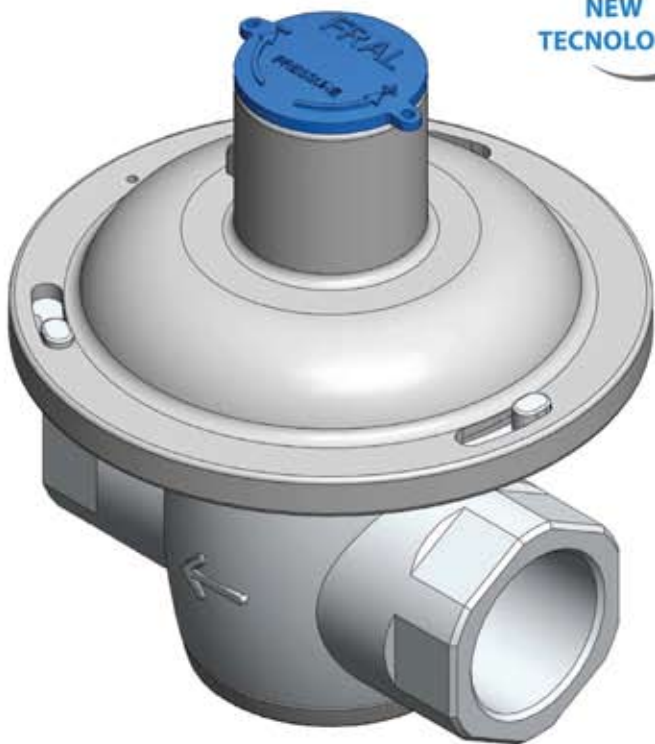
Tempi di consegna
Delivery time



Ricambi
Parts

www.fralsrl.eu

NEW
TECNOLOGY



SERIES SRT-10
REGOLATORE STABILIZATORE DI PRESSIONE
STABILIZER PRESSURE REGULATOR

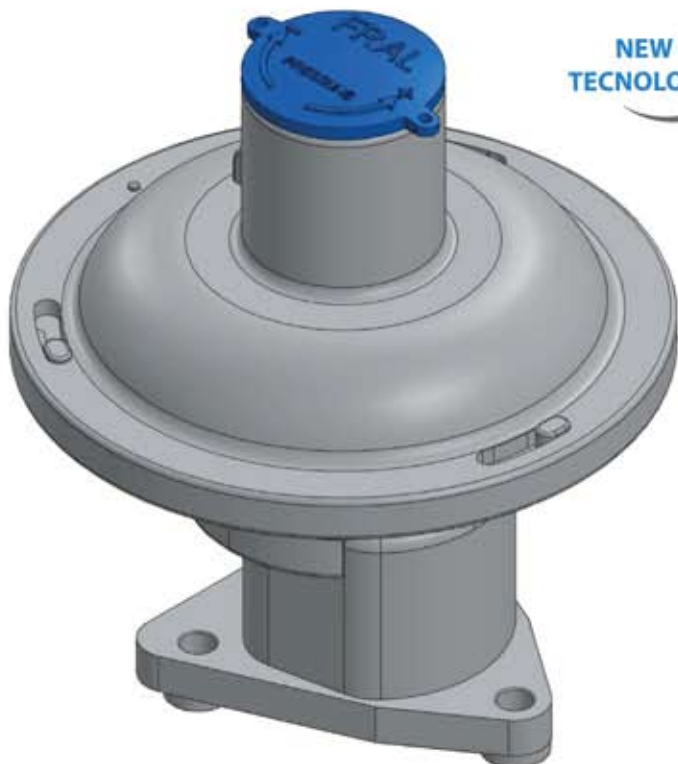
- BPU inlet pressure range: with P_u max 500 mbar
- Design pressure PS: 1 bar
- Wd outlet pressure range: 10÷200 mbar range
- AC Accuracy class: AC up to 5%
- SG Closing pressure class: SG up to 10%
- Temperature class: 2 (-20°C +60°C) - (-4°F +140°F)
- Filter (filtration degree): 50 μ m

RANGE FROM 10 Stm³/h – 353,2 cf/h TO 50 Stm³/h – 1766,2 cf/h

IT COMPLIES WITH EEC DIRECTIVE 90/396

SRT-10

NEW
TECNOLOGY



SERIES SRU-10
REGOLATORE STABILIZATORE DI PRESSIONE
STABILIZER PRESSURE REGULATOR

- BPU inlet pressure range: with P_u max 500 mbar
- Design pressure PS: 1 bar
- Wd outlet pressure range: 10÷200 mbar range
- AC Accuracy class: AC up to 5%
- SG Closing pressure class: SG up to 10%
- Temperature class: 2 (-20°C +60°C) - (-4°F +140°F)
- Filter (filtration degree): 50 μ m

RANGE FROM 10 Stm³/h – 353,2 cf/h TO 50 Stm³/h – 1766,2 cf/h

IT COMPLIES WITH EEC DIRECTIVE 90/396

SRU-10



NEW
TECNOLOGY



SERIES SRS-10
STABILIZATORE DI PRESSIONE
STABILIZER PRESSURE REGULATOR

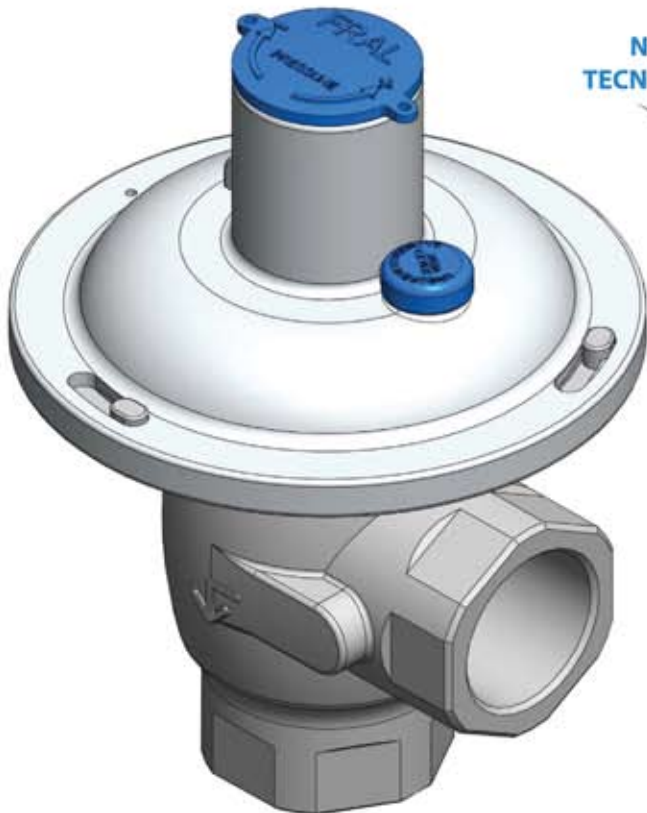
- BPU inlet pressure range: with P_u max 500 mbar
- Design pressure PS: 1 bar
- Wd outlet pressure range: 10÷200 mbar range
- AC Accuracy class: AC up to 5%
- SG Closing pressure class: SG up to 10%
- Temperature class: 2 (-20°C +60°C) - (-4°F +140°F)
- Filter (filtration degree): 50 μ m

RANGE FROM 10 Sm³/h – 353,2 cf/h TO 50 Sm³/h – 1766,2 cf/h

IT COMPLIES WITH EEC DIRECTIVE 90/396

SRS-10

NEW
TECNOLOGY



SERIE RV-10-20-30 VALVOLA DI SFIORO
SERIE RV-10-20-30 RELIEF VALVE

Max allowable pressure: PS 20 bar - 290 Psi

RV- 10 / 20 / 30

- SERIES_10 25÷240 mbar - 10÷96" wc
- SERIES_20 250÷850 mbar - 100÷340" wc
- SERIES_30 800÷6000 mbar - 320÷2400" wc

Accuracy class (AG): AG 2.5 /10%
Temperature class: 2 (-20°C +60°C) - (-4°F +140°F)

UPON REQUEST

Inlet pressure test point.
Low temperature version (-40°C+75°C)-(-40°F+167°F)

CONFORMING TO THE 97/23 CE PED DIRECTIVE

RV-10 20 30



SERIE B-29 B-52 REGULATOR DOUBLE STAGE

The B-29 and B-52 series of two stage self-driven spring loaded regulators are widely used in both civil and industrial installations using Natural Gas, LPG and other non corrosive gases.

They are designed for either direct installation to a gas meter or used in general pipeline work. They can be mounted in any position provided they are protected from weather.

A balanced two stage regulator results in accurate regulation and high operational reliability. Where the installation is in an enclosed area, the internal relief vent can be piped to outside.

High security with the perfect balance of the equipment.

Simple installation procedure.

The regulators are manufactured according to EN13785.

Inlet pressure range bpu:	Ø 10÷80 bar - bpu:145÷116 Psi
Max allowable pressure:	PS 8.0bar - PS: 116 Psi
Outlet pressure range Wd:	BP: 12÷100 mbar - Wd: 4,8÷40" wc
Over pressure shut off setting range:	Wd OPSO BP 30÷150 mbar Wd OPSO BP 12÷ 60,0" wc
Accuracy class:	AC up to 5%
Lock up pressure class:	SG up to 10%
Temperature class:	2 (-20°C +60°C) - (-4° F +140° F)
Response time:	lower than 2 sec.
Inlet filter:	area 400 mm ² 90 µm efficiency.

Over pressure shut-off device (OPSO)

Under pressure shut-off device (UPS0). STD value not adjustable.

Excess flow valve.

Manual reset of safety shutoff device only.

Relief valve.

Safety shut-off for second stage diaphragm failure.

SERIE B-29 B-52 REGOLATORE DOPPIO STADIO

I regolatori di pressione autoazionati a doppio stadio bilanciati della serie B-29 e B-52, trovano vasto impiego sia nelle installazioni civili che industriali, che utilizzano Gas Naturale o GPL o gas non corrosivi. Tali regolatori possono essere installati direttamente su contatori di utenza o su impianti per utilizzo civile.

L'installazione è prevista in qualsiasi posizione ma in ambienti o locali protetti dalle intemperie.

La valvola di sfioro interna del medesimo è convogliabile all'esterno nel caso di installazioni in locali non areati o chiusi o per installazioni interrato.

Grazie alla concezione con doppio stadio di regolazione si ottiene:

- elevata precisione di regolazione;
- elevata affidabilità di esercizio;
- un'elevata sicurezza grazie alla perfetta bilanciatura dell'apparecchiatura.

Semplicità d'installazione. I regolatori sono costruiti secondo EN13785.

SERIES	Nominal CAPACITY	REQUIRED MINIMUM Inlet pressure bar (Psi)
B-29	25 Stm ³ /h – 882.8 cf/h	0.3 - (4,3)
B-52 1	50 Stm ³ /h – 1765.7 cf/h	0.5 - (7.2)
B-52 2	75 Stm ³ /h – 2649.2 cf/h	0.5 - (7.2)
B-52 3	100 Stm ³ /h – 3532.3 cf/h	0.5 - (7.2)

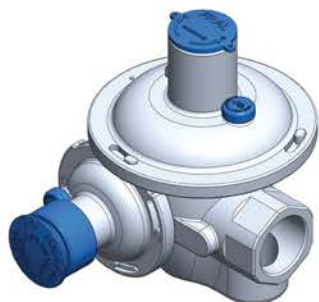
UPON REQUEST

Inlet and outlet pressure test point.

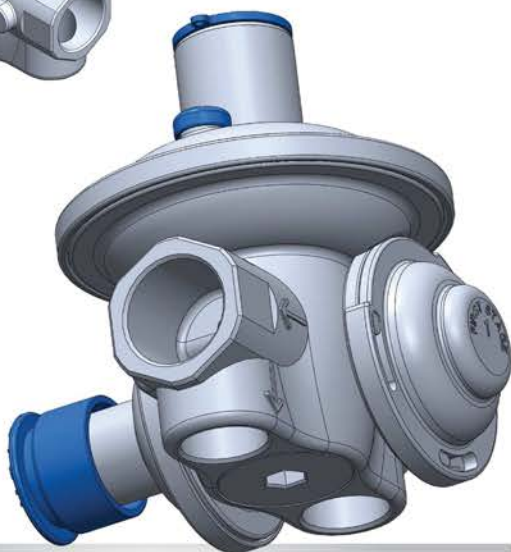
Low temperature version (-40°C+75°C) - (-40°F+167°F)

CONFORMING TO THE 97/23 CE PED DIRECTIVE

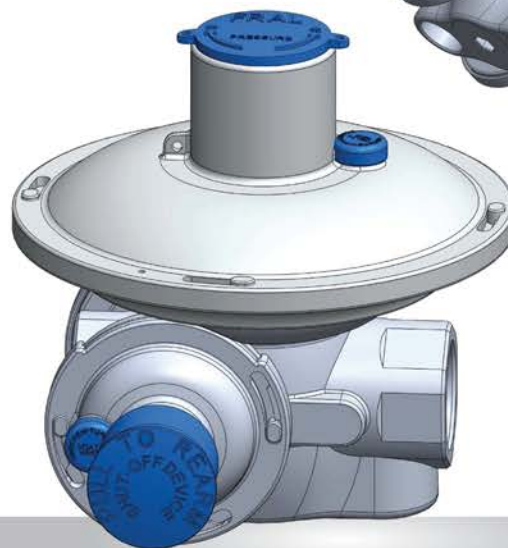
NEW
TECNOLOGY

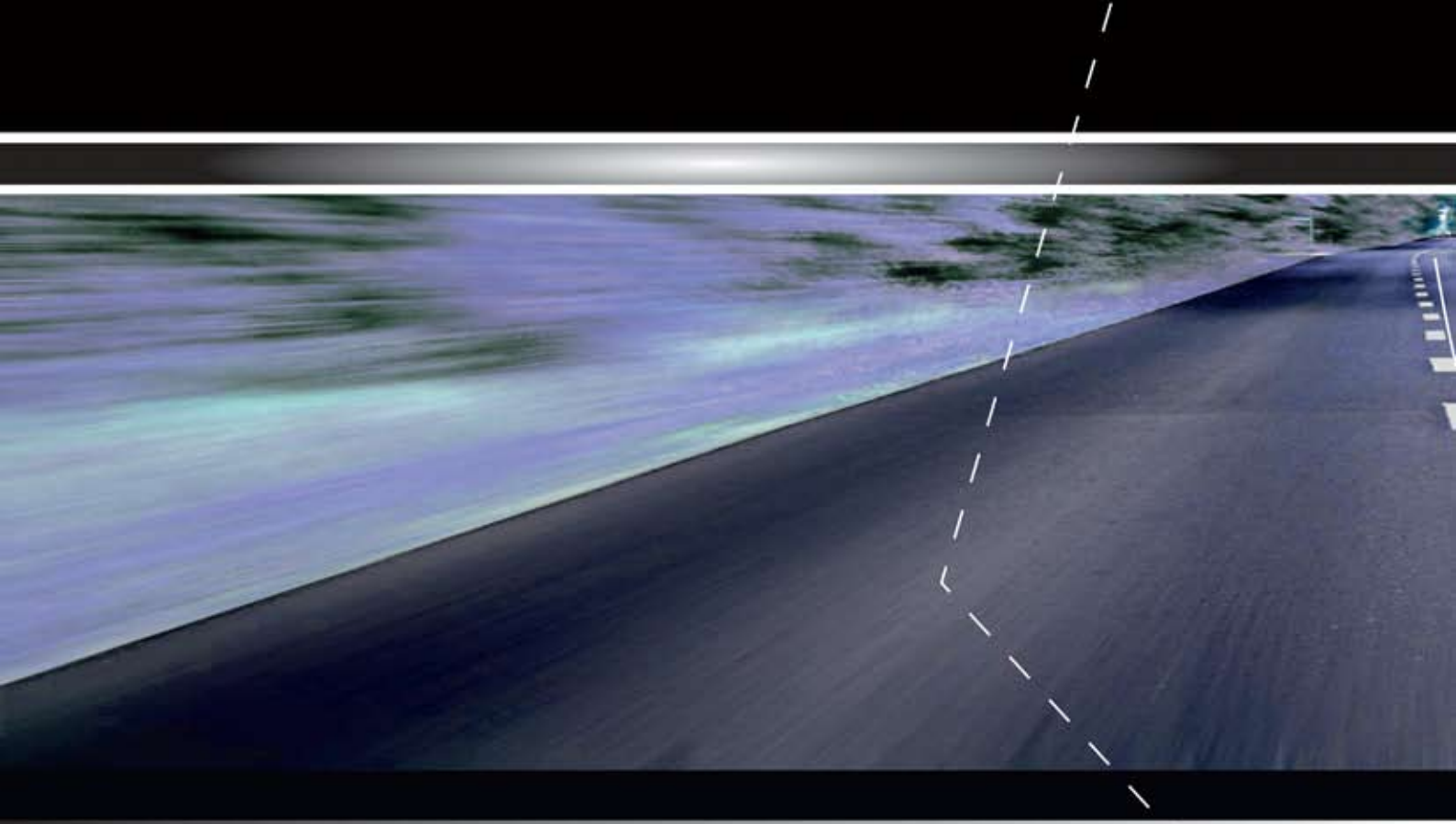


B-29



B-52





FRAL srl
Via Zanella, 6
36010 Cavazzale Monticello C.O. (VI)
Tel. +39 0444 946164 - Fax. +39 0444 946105
www.fralsrl.eu

FAST LINE

Telefono ITALIA
800 98 44 74
ITALY

E-mail ESTERO
@tecnico@fralsrl.eu
FOREIGN COUNTRY

CERTIFICATION

