

N 922 SERIES – 50 HZ VERSION

CHEMICALLY RESISTANT GAS SAMPLING PUMPS



N 922 FTE



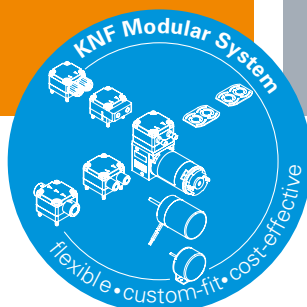
N 922 FT.29 E – flow rate can be adjusted using an integrated bypass valve

ADVANTAGES

- High chemical resistance
- Robust design
- Easy to service – wearing parts are inexpensively and easy to replace
- Maintenance work can be easily carried out even on assembled analytical systems
- Durable even with difficult operating conditions

POSSIBLE AREAS OF USE

- Environmental monitoring – especially in stationary emission measurement technology (CEMS)
- Process industry
- Chemical industry



Please visit our website
www.knf.com
 to get more information

PERFORMANCE DATA

Series model	N 922 8L		N 922 16L	
	FTE	FT.29 E	FTE	FT.29 E
Pump head	Modified PTFE			
Diaphragm	PTFE-coated			
Valves	FFPM			
Flow rate at atm. pressure (l/min)	7.5 ± 10 %	3.0–7.5 ± 10 %	16.0 ± 10 %	10.0–16.0 ± 10 %
Ultimate vacuum (mbar abs.)	350		200	
Max. operating pressure (bar rel./psig)	1.5/21.8		2.0/29.0	
Permissible ambient temperature (°C)	+5 ... +60 – 0 if frost-free (non-condensing)			
Permissible media temperature (°C)	0 ... +60			
Weight (kg/lbs)	7.3/16.1			

ELECTRICAL DATA

Voltage (V) Capacitor motor	115 230 100 220
Voltage (V) Three-phase motor	230/400
Protection class motor	IP 55
Protection class pump	IP 54
Frequency (Hz)	50
Power P ₁ (W) Capacitor motor	195 185 200 220
Power P ₁ (W) Three-phase motor	185
I _{max} (A) Capacitor motor	2.70 1.35 2.60 1.20
I _{max} (A) Three-phase motor	0.83/0.48

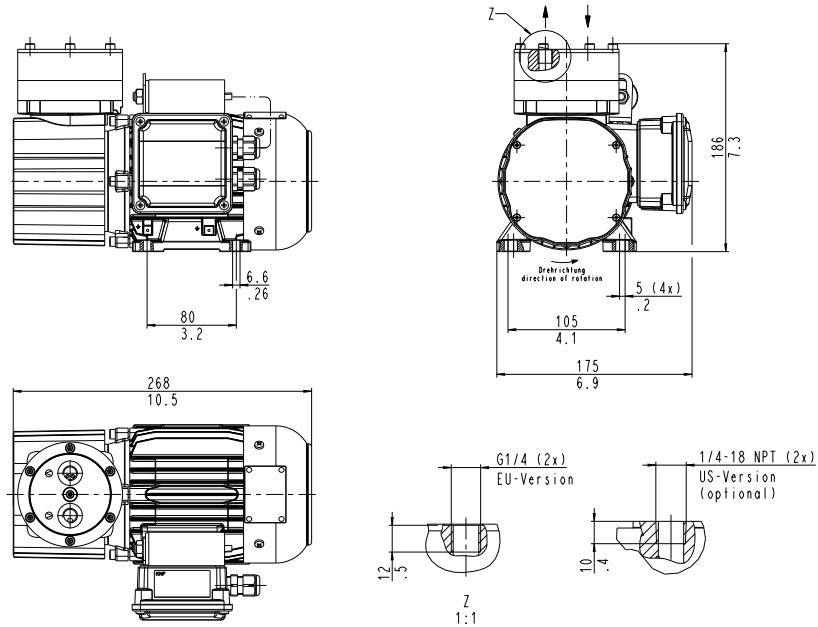
N 922 FTE 8L – 50 HZ VERSION

PERFORMANCE DATA

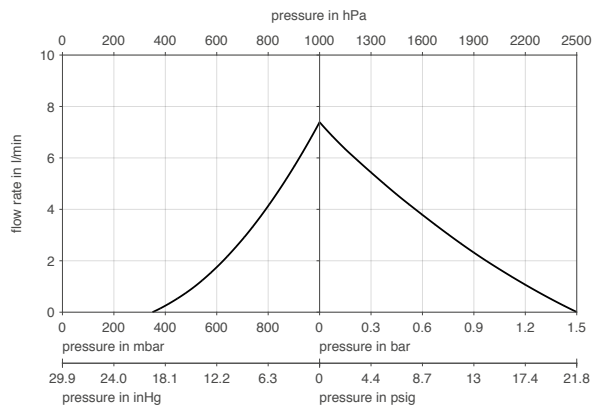
Series model	Flow rate at atm. pressure (l/min)	Max. operating pressure (bar rel./psig)	Ultimate vacuum (mbar abs.)
N 922 FTE 8L	7.5 ± 10 %	1.5/21.8	350

Flow rate determined at 20 °C, 1013 mbar abs.
 (Pressure 0 to 1013 mbar abs. in accordance with ISO 21360-1/2)

N 922 FTE 8L

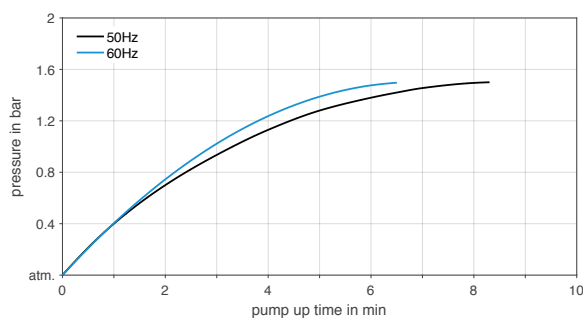


N 922 FTE 8L

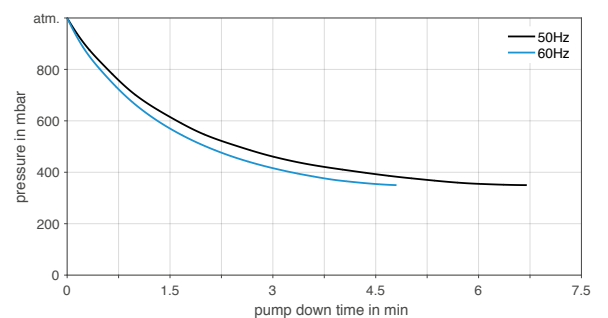


Flow rate determined at 20°C, 1013 mbar abs.
 (Pressure 0 to 1013 mbar abs. in accordance with ISO 21360-1/2)

N 922 FTE 8L | PUMP UP TIME FOR 20 LITER VESSEL



N 922 FTE 8L | PUMP DOWN TIME FOR 20 LITER VESSEL



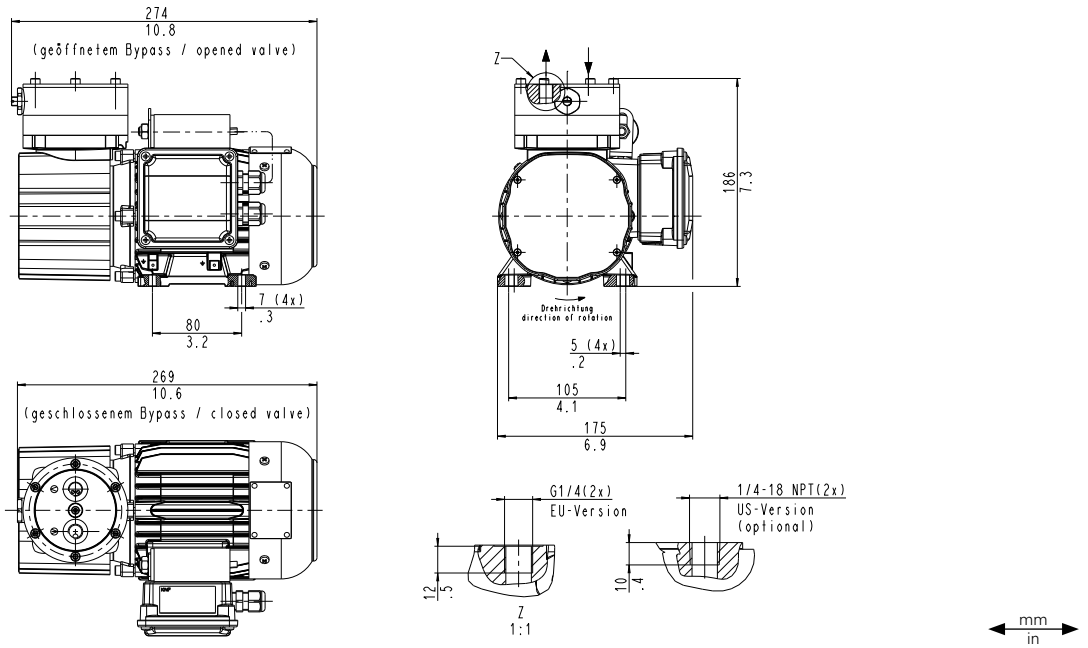
N 922 FT.29 E 8L – 50 HZ VERSION

PERFORMANCE DATA

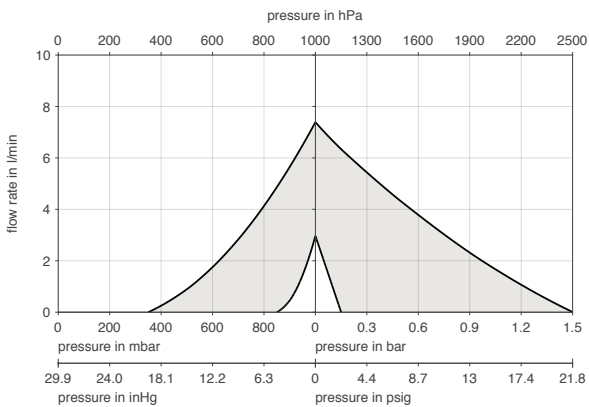
Series model	Flow rate at atm. pressure (l/min)	Max. operating pressure (bar rel./psig)	Ultimate vacuum (mbar abs.)
N 922 FT.29 E 8L	3.0–7.5 ± 10 %	1.5/21.8	350

Flow rate determined at 20 °C, 1013 mbar abs.
 (Pressure 0 to 1013 mbar abs. in accordance with ISO 21360-1/2)

N 922 FT.29 E 8L

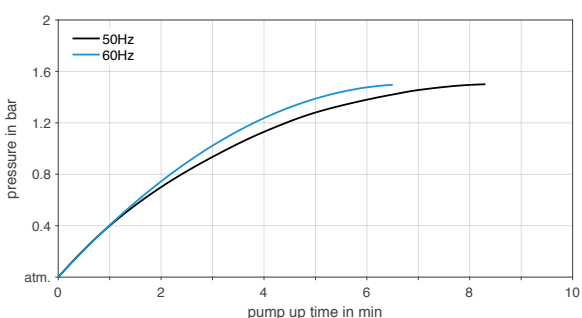


N 922 FT.29 E 8L

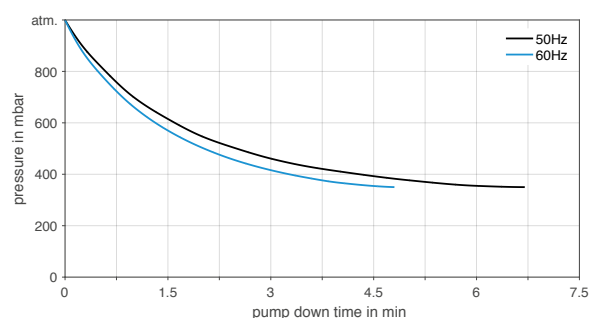


Flow rate determined at 20°C, 1013 mbar abs.
 (Pressure 0 to 1013 mbar abs. in accordance with ISO 21360-1/2)

N 922 FT.29 E 8L | PUMP UP TIME FOR 20 LITER VESSEL



N 922 FT.29 E 8L | PUMP DOWN TIME FOR 20 LITER VESSEL



N 922 FTE 16L – 50 HZ VERSION

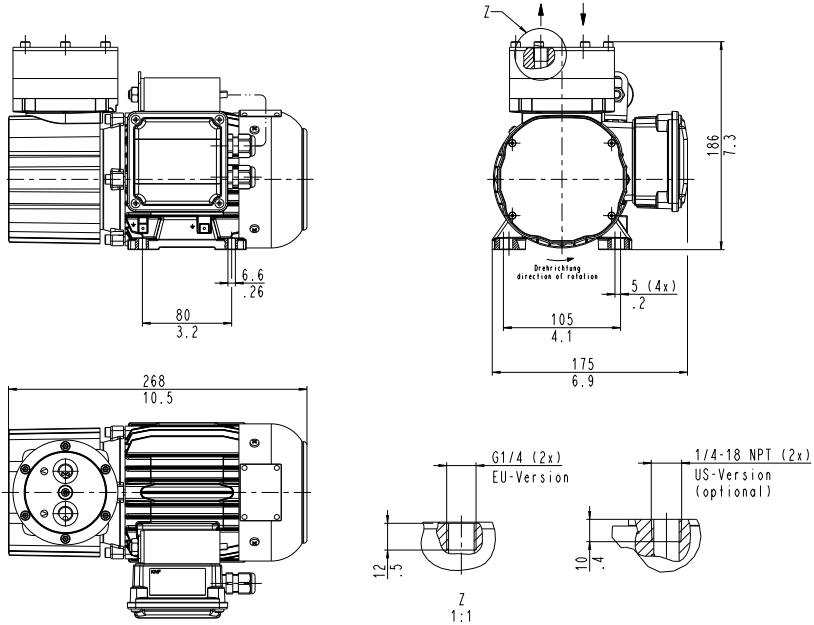
PERFORMANCE DATA

Series model	Flow rate at atm. pressure (l/min)	Max. operating pressure (bar rel./psig)	Ultimate vacuum (mbar abs.)
N 922 FTE 16L	16.0 ± 10 %	2.0/29.0	200

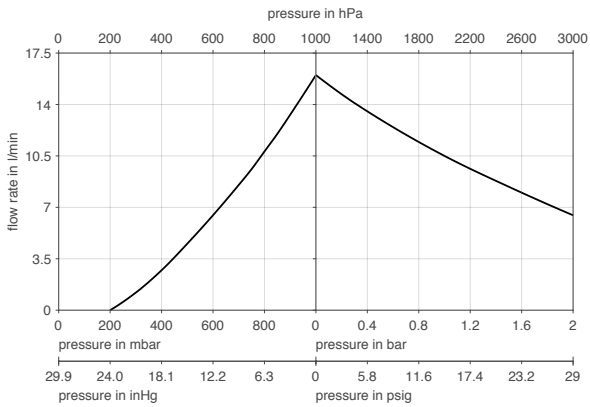
Flow rate determined at 20 °C, 1013 mbar abs.

(Pressure 0 to 1013 mbar abs. in accordance with ISO 21360-1/2)

N 922 FTE 16L



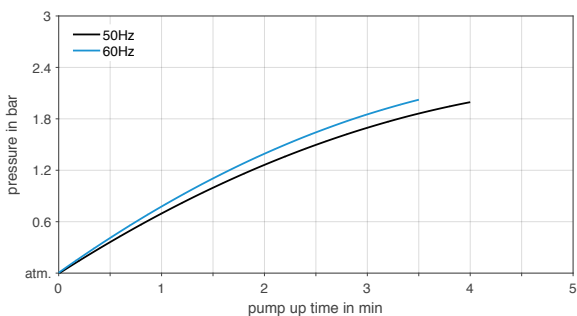
N 922 FTE 16L



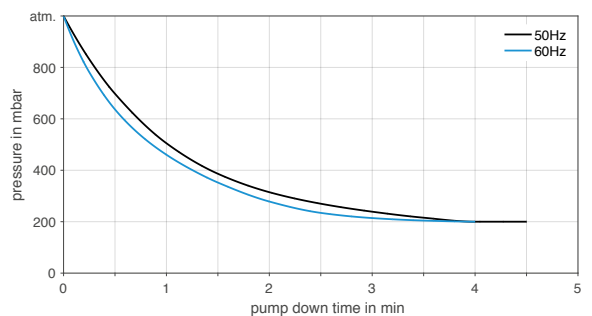
Flow rate determined at 20°C, 1013 mbar abs.

(Pressure 0 to 1013 mbar abs. in accordance with ISO 21360-1/2)

N 922 FTE 16L | PUMP UP TIME FOR 20 LITER VESSEL



N 922 FTE 16L | PUMP DOWN TIME FOR 20 LITER VESSEL



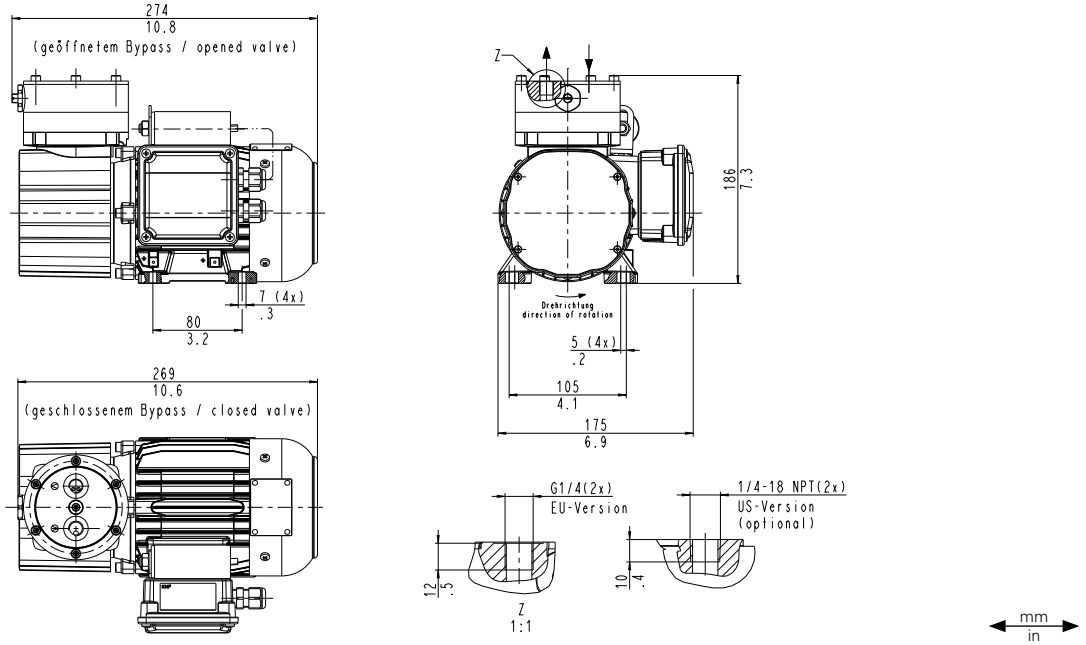
N 922 FT.29 E 16L – 50 HZ VERSION

PERFORMANCE DATA

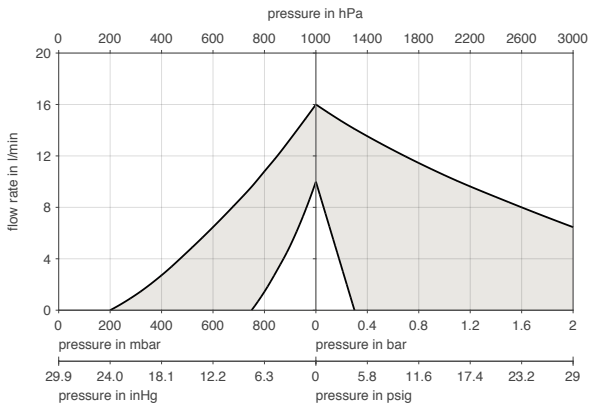
Series model	Flow rate at atm. pressure (l/min)	Max. operating pressure (bar rel./psig)	Ultimate vacuum (mbar abs.)
N 922 FT.29 E 16L	10.0–16.0 ± 10 %	2.0/29.0	200

Flow rate determined at 20 °C, 1013 mbar abs.
(Pressure 0 to 1013 mbar abs. in accordance with ISO 21360-1/2)

N 922 FT.29 E 16L

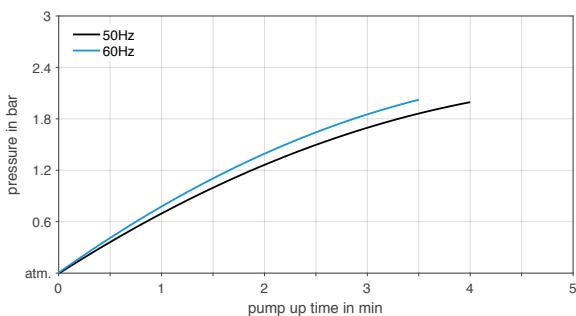


N 922 FT.29 E 16L

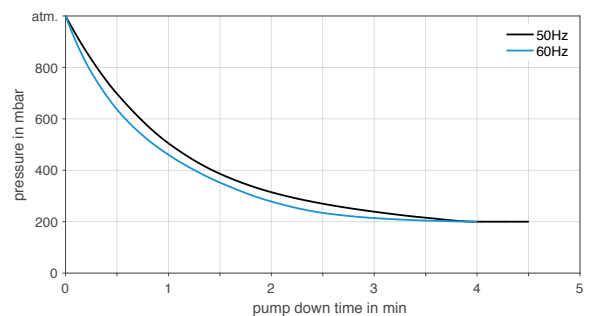


Flow rate determined at 20°C, 1013 mbar abs.
(Pressure 0 to 1013 mbar abs. in accordance with ISO 21360-1/2)

N 922 FT.29 E 16L | PUMP UP TIME FOR 20 LITER VESSEL



N 922 FT.29 E 16L | PUMP DOWN TIME FOR 20 LITER VESSEL



ACCESSORIES

Description	Part No.
Tube fitting for tube ID 6, PVDF	303623
Mounting kit shock mounts	313180
Mounting kit shock mounts and mounting bracket	313181

SPARE PARTS

Description	Part No.
Spare parts kit N 922 FTE	313515
Spare parts kit N 922 FT.29 E	313516
Throttle valve (only for .29 versions)	309629

The performance values for the series models shown on this data sheet were determined under test conditions. The actual performance values may differ and depend in particular on the usage conditions and therefore on the specific application, on the parameters of the components involved in the user's system and on any technical modifications carried out which deviate from the standard configuration or the as delivered condition.

If individual designs have been created for specific customers on the basis of series models, other technical performance data may apply.

Before operation begins, the relevant operating instructions and/or assembly or installation instructions should be read and the safety information contained in these instructions should be noted.

KNF reserves the right to make changes to the product and the associated documentation without prior notice to the customer.



www.knf.com