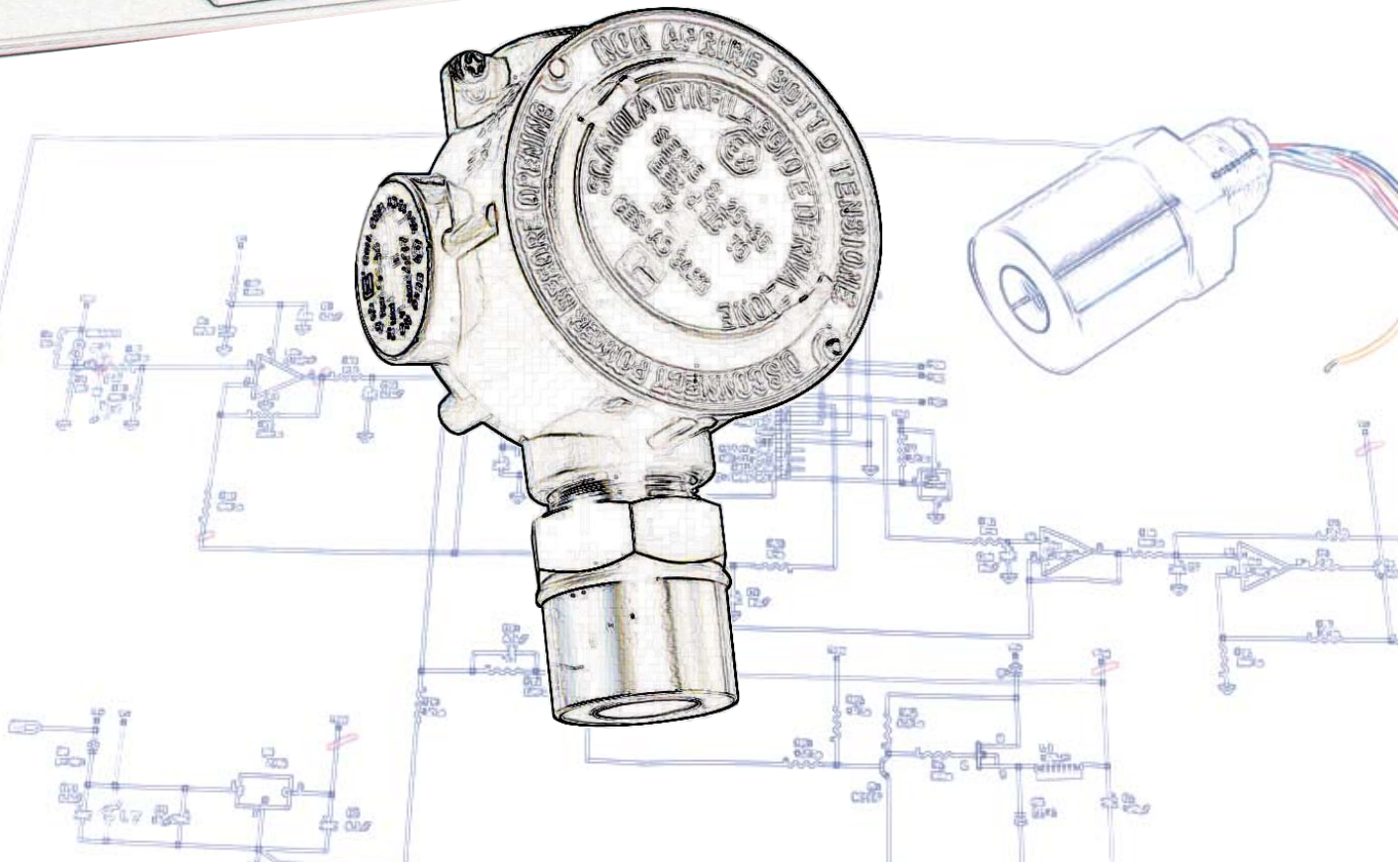
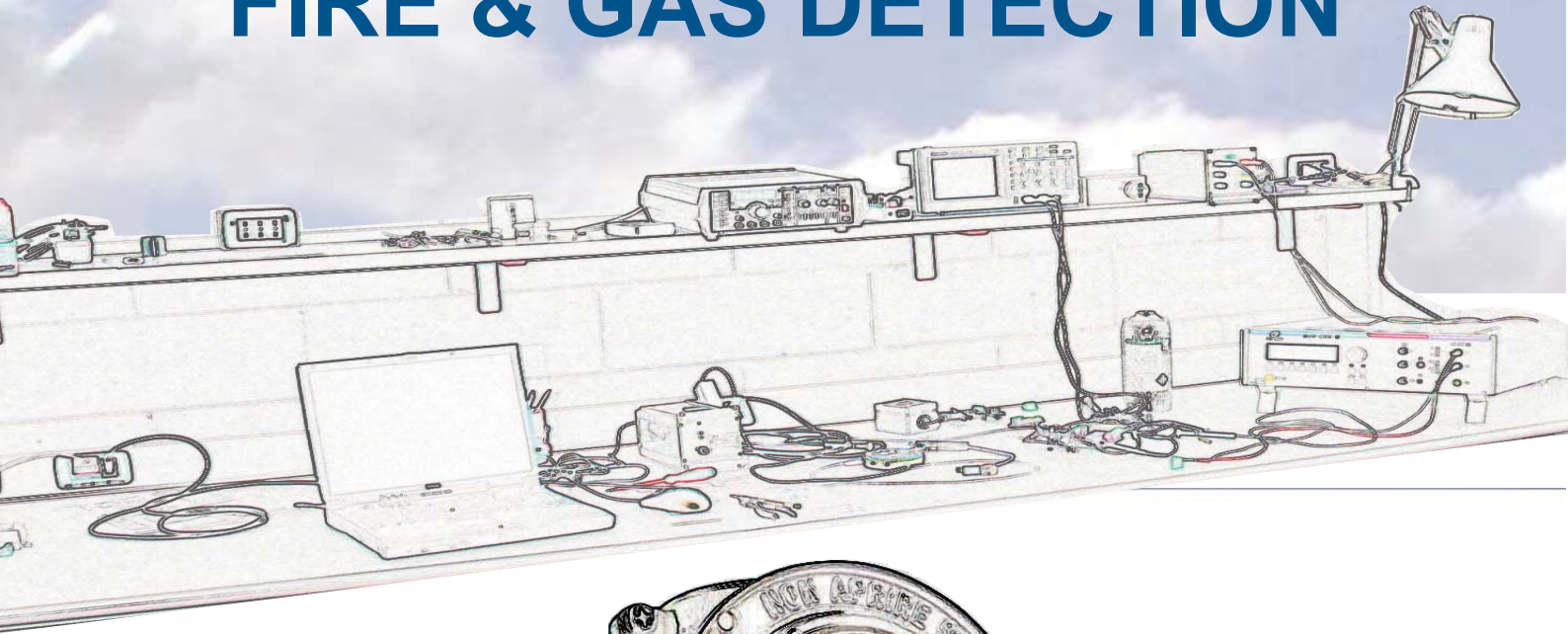




# YOUR PARTNER IN FIRE & GAS DETECTION

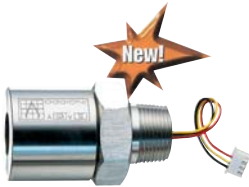


OGGIONI s.a.s. Via Laboratori Autobianchi, 1 - P.T.B. Edif.13/O - 20832 Desio (MB) Italy  
Tel.+39 0362 629135 Fax. +39 0362 622531 [www.oggionisas.com](http://www.oggionisas.com) - [info@oggionisas.com](mailto:info@oggionisas.com)

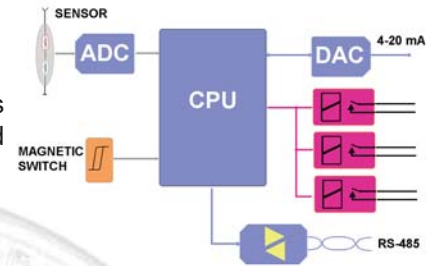
# GAS TRANSMITTERS with enose® technology

## Microprocessor based gas detector designed to measure gas concentrations with different range %L.E.L., ppm, %Vol., TLV, TWA.

### enose® technology inside



**enose®** Technology consists in gas transmitters series based on high performance RISC processor self contained and integrated in a sturdy head.



### RAS/AD



- RAS/AD and RAS/DY are ATEX certified Gas Detectors for a variety of Explosive and Toxic gases
- Microprocessor based
  - 4-20 mA output
  - Three Voltage free contact relays
  - RS-485 MODBUS RTU serial interface
  - Bluetooth wireless communication (optional)



II 2G Ex d IIC T6

### RAS/DY



- ATEX Explosion Proof housing with display
- LCD Display 8 characters x 2 lines
- Non Intrusive "One Person" calibration
- Fully programmable
- Small size, Low Power consumption
- Sturdy construction (available also in Stainless Steel housing)
- Built-in relays enable full stand-alone capability
- Optional Magnetic Keypad for thresholds setting



II 2G Ex d IIC T6

### DUST/AD



- DUST/AD and DY are IP65 Gas Detectors for Industrial applications for Explosive and Toxic gases.
- Microprocessor based
  - 4-20 mA output
  - Three Voltage free contact relays
  - RS-485 MODBUS RTU serial interface
  - IP65 Aluminium body (Stainless Steel housing also available)
  - Bluetooth wireless communication (optional)



### DUST/DY



- LCD Display 8 characters x 2 lines
- Non Intrusive "One Person" calibration
- Fully programmable
- Small size
- Low Power consumption
- IP65 Aluminium body with display and Keypad
- Built-in or separate sensor transmitter head
- Built-in relays enable full stand-alone capability



Available with Stainless Steel housing

### PARK



- Detector series for continuous monitoring of combustible (LPG or Gasoline Vapours) or CO and NOx gases in atmosphere. Conceived for Car parking areas.
- 4-20 mA output
  - IP65 Aluminium body
  - RS-485 Modbus RTU serial interface
  - Available also PARK-TWIN dual sensors for LPG/CO or NO or NO2

**OGGIONI s.a.s. YOUR PARTNER IN FIRE & GAS DETECTION**

## INTELLIGENT HEAT DETECTION OVER TEMPERATURE AND SUPPRESSION RELEASE DEVICES



**TMP2-J & TMP2-JO**

**TMP2 series:** Electronic fire and overheat detectors.

Certificate ATEX II 2G Ex d IIC T6  
High reliability, dependable long-life.  
Temperature set-point levels from -20°C to 120°C.  
Immune from EMI disturbances and virtually eliminates false alarms.  
Different output configurations.  
Static set points and Rate of Rise feature.  
Self-diagnosis procedure.  
Wide range of temperature settings.  
Two wires technology.



**II 2G Ex d IIC T6**



**TMP2-D**

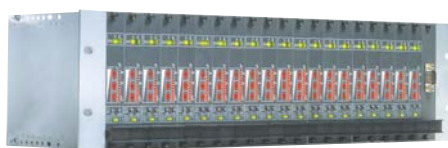
**EN54-5 CPD  
Certified**

Suitable for use in explosive atmospheres (TMP2-J)  
Commercial and Industrial plants  
Hazardous material stores (TMP2-J)  
Extraction ducts  
Compatible with all fire alarm control panels



Available Configuration & Diagnostic software with serial connection

## CONTROL PANELS AND MODULAR SYSTEMS



**REL/isp** consists of plug-in module which fits a standard 3U (51/4") 19 inches eurocard rack. Each module REL/isp consists of two input channels designed to operate with 4-20 mA transmitters. Bar graph display or LCD Display, built in power supply, audio and visual alarms.



**AR400** system is particularly suitable for small locations or for large sites where it is preferable to have a number of small self-contained monitoring systems connected by a field bus (RS-485) to a remote Host system.



AR400 system consists of one power unit, up to 4 REL/isp modules and 12 ISP alarms outputs with (SPDT) relay rated at 3A 110 Vac. Driver for serial line RS-485 MODBUS RTU.



**AR600...AR2000** are standard case for max. 40 REL/isp modules (max. of 80 gas detectors with AR2000 stand alone 2m high cabinet). AR600/AR2000 cabinets are supplied fully wired, with power unit up to 40 REL/isp modules and 60 ISP alarms outputs with (SPDT) relay rated at 3A 110 Vac. AR series cabinets are equipped with Driver for serial line RS-485.



**CM-10, CM-20, CM-80** Are control units for one (CM-10), two (CM-20), eight (CM-80) input channels designed to operate with 4-20mA transmitters, or 48 detectors (CM-80-ID) connected through Modbus RTU field bus.

- Totally programmable by operator (CM-20 & CM-80)
- Push-button programming function
- Two settable alarm setpoints
- Programmable relay outputs
- Front panel LEDs for Alarm indications
- Audible alarm indicator (buzzer)
- Serial RS485 Modbus RTU Protocol
- LCD Digital Display 8 characters x 2 lines or 20 characters x 2 lines



## SYSTEMS AND SOFTWARE



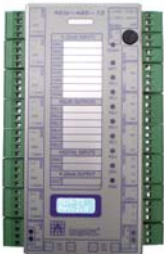
**EXcetera** Dual processor controller  
32-bit ARM9 Processor; 64 MB RAM, 256 MB Flash memory  
1 GB Flash memory Card, Serial Ports: RS-485, Modbus protocol  
LINUX operating system based  
Two Optic fiber drivers 62.5/125um (3.5 dB/Km).  
Ethernet Port, FTP, WiFi optional, Web Programmable  
Built-in Power supply and Battery charger  
4" or 7" TFT LCD Display  
Easy accessible using any web browser



**Operator Terminal LCD/85**  
High Performance Touch Screen Terminals  
High resolution graphic display  
LCD/85 Display 320 x 240, 16 colors TFT

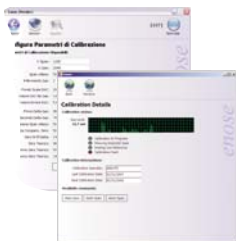


**EXcetera\_Panel**  
Touch Screen Display Station  
12" Active Matrix TFT display  
PCI/ISA or PC104 expansion slot  
3 RS-232/485 serial Ports  
Ethernet port



**RS 485 Modbus remote I/O modules**  
Built-in 27.5 Vdc 2.5A stabilized power supply  
Controlled output for a 24V, 7.2 A/h back-up battery.  
n.8 x 4-20mA inputs; n.2 digital optocoupled inputs; n.6 contact relays outputs  
Different I/O configurations available

## SOFTWARE



**eNoseBlu2** Special S/W for enose Gas Transmitters maintenance and configuration.  
Data Log capability, Trends, Calibration report, Stand-Alone calibration station.

**EXcetera\_CFG** Start-up and configuration package for EXcetera Controller.



**EXcetera\_HMI** Innovative general purpose Monitor S/W.  
Objects oriented package for Windows 98SE/ME/XP  
Easy-to-use, PC based applications generator.  
Dynamic Data Exchange (DDE) with Windows Applications.  
High Level Operator Interface, Graphical pages.  
Alarms log, Real Time & Historical Trends.

# Production Quality Assurance ATEX CERTIFIED



**OGGIONI**

**CE DECLARATION OF CONFORMITY**

Discharge di gas generata dal motore a gasolio per uso in ambienti chiusi...  
 Isolamento elettrico...  
 Protezione contro i contatti...  
 Protezione contro i sovraccarichi...  
 Protezione contro i cortocircuiti...  
 Protezione contro i sovraccarichi...  
 Protezione contro i cortocircuiti...  
 Protezione contro i sovraccarichi...  
 Protezione contro i cortocircuiti...

**CESI** **CERTIFICATE** **EX**

**EC-TYPE EXAMINATION CERTIFICATE**

Equipment of Protection System intended for use in potentially explosive atmospheres

**CESI-ATEX**

Model: **OGGIONI**

Manufacturer: **OGGIONI S.p.A.**

Address: **Via Carrobbio da Biadene, 11 - 20832 Biadene (MB) - Italia**

CEC, notified body, is notified in accordance with Article 4 of the Council Directive 90/269/EEC of 23 June 1990, relating to the approximation of laws, regulations, administrative provisions and standards of the Member States concerning the minimum requirements for the design, construction and installation of protective systems intended for use in potentially explosive atmospheres.

The examination and test results are recorded in the certificate (number: **EX 00010-2007-01-02** - **EX 00010-2007-01-02**).

From June 23, 2007, Examination issued on June 23, 2007.

Page 1/2

**Certificato di conformità** **CESI CERT**

Il presente certificato è rilasciato per la costruzione elettrica

**OGGIONI S.p.A.**

Model: **OGGIONI**

Manufacturer: **OGGIONI S.p.A.**

Address: **Via Carrobbio da Biadene, 11 - 20832 Biadene (MB) - Italia**

CEC, notified body, is notified in accordance with Article 4 of the Council Directive 90/269/EEC of 23 June 1990, relating to the approximation of laws, regulations, administrative provisions and standards of the Member States concerning the minimum requirements for the design, construction and installation of protective systems intended for use in potentially explosive atmospheres.

The examination and test results are recorded in the certificate (number: **EX 00010-2007-01-02** - **EX 00010-2007-01-02**).

From June 23, 2007, Examination issued on June 23, 2007.

**Worldwide Testing and certification** **Normko**

**CERTIFICATE OF QUALITY ASSURANCE SYSTEM ACCORDING TO ISO 9001**

OGGIONI S.p.A.

Model: **OGGIONI**

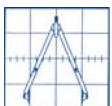
Manufacturer: **OGGIONI S.p.A.**

Address: **Via Carrobbio da Biadene, 11 - 20832 Biadene (MB) - Italia**

Normko is a notified body, notified in accordance with Article 11 of the Council Directive 90/269/EEC of 23 June 1990, relating to the approximation of laws, regulations, administrative provisions and standards of the Member States concerning the minimum requirements for the design, construction and installation of protective systems intended for use in potentially explosive atmospheres.

The examination and test results are recorded in the certificate (number: **EX 00010-2007-01-02** - **EX 00010-2007-01-02**).

From June 23, 2007, Examination issued on June 23, 2007.



**OGGIONI s.a.s. Via Lavoratori Autobianchi, 1 - P.T.B. Edif.13/O - 20832 Desio (MB) IT**  
**Tel. +39 0362 629135 Fax. +39 0362 622531 www.oggonisas.com - info@oggonisas.com**



**OGGIONI s.a.s. YOUR PARTNER IN FIRE & GAS DETECTION**

DISTRIBUTED BY

**OGGIONI s.a.s. Via Lavoratori Autobianchi, 1 - P.T.B. Edif.13/O - 20832 Desio (MB) Italy  
Tel.+39 0362 629135 Fax.+39 0362 622531 [www.oggionisas.com](http://www.oggionisas.com) - [info@oggionisas.com](mailto:info@oggionisas.com)**