

# EXcetera® Fire & Gas Modular Controller



EXcetera® is a modular multitasking controller designed to satisfy any monitoring task and to meet all required safety standards.

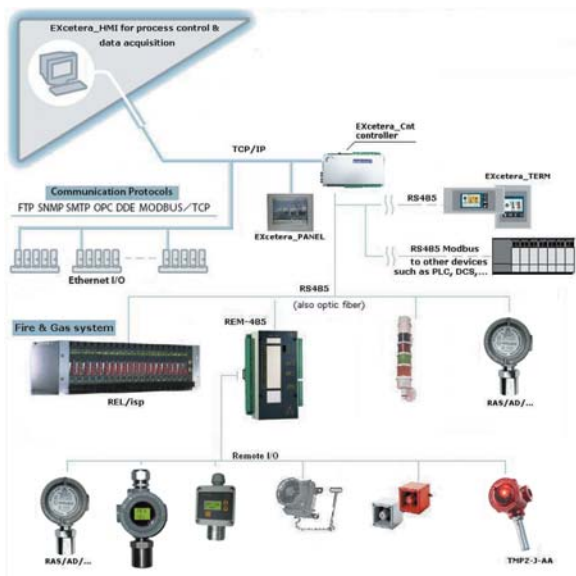
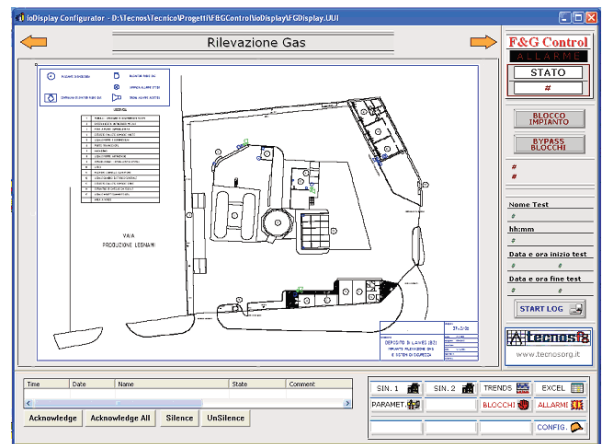
Thanks to the modular design EXcetera® can be inexpensively used into every type of application. From large-scale site monitoring systems in industrial complex applications to measurement and control tasks in small and medium-sized plants.

Addressable Large back-lit graphic touchscreen display with plain-text readout



**EXcetera\_CFG**  
Start-up & Configuration software package

**EXcetera\_HMI**  
High level operator interface, graphical pages, Alarms log, Real Time & Historical Trends.



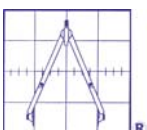
Digital bus technology with standard protocols, ModBUS RTU, OPC, TCP/IP or Ethernet ensure absolute reliability and allow Stand-alone monitoring configuration or communication with remote DCS, BMS or PC.

Redundant data processing:  
SIL 1 capability [non-redundant] and SIL 2 – 3 capability. Compliant [EN 61508]

In compliance with the following Standards required for gas warning systems:

[EN 50104, EN 50271, EN 61508, EN 61779-1, EN 61779-4, EN 61779-5]

Copyright Oggioni s.a.s.



**OGGIONI s.a.s.** Via Lavoratori Autobianchi, 1 - P.T.B. Edif.13/O - 20832 Desio (MB) Italy  
Tel.+39 0362 995062 Fax. +39 0362 622531 e-mail: info@oggionisas.com www.oggionisas.com

## Remote I/O

### REM-485 /T3

8 Analogue input 0-5 V; 4-20 mA  
 2 Digital optocoupled inputs  
 6 Free contacts relay output  
 1 Analogue 4-20 mA output  
 Built-in 30W Power Supply  
 Battery charger circuit for emergency power operation  
 Two RS-485 drivers  
 Two Optical Cable Drivers 62.5/125 um 3.5 db/Km.



### REM-485/T5 Redundancy Module

8 Open Collector monitored output (Sink or Source) for redundant T or H configurations outputs [24 V, 0.3 A] allow direct control of relays or other circuit elements.  
 Two RS-485 drivers  
 Two Optical Cable Drivers  
 62.5/125 um 3.5 db/Km.

### SC-12

Relay output for rail mounting  
 12 SPST In System Programmable  
 Relays card  
 3A 110 Vac



### SC-8

Relay output for rail mounting  
 8 SPDT Relays card for redundant T or H configurations.  
 3A 110 Vac



**RS-485 Modbus Addressable**  
 Audible and Visible Alarms repeater



**Optobox**  
 Interface Card is the easiest solution to exchange data between RS-232, RS-485 or Optical cable network. Hardware WD system checks the status of the optical path Led display and a buzzer alert in case of invalid module status.



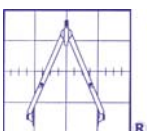
## LCD Operator Terminals

### LCD 185

High Performance Touch Screen Terminals  
 320x240 16 colour TFT



**EXcetera\_Panel for High level HMI solutions**  
 DISPLAY STATION with Touch Screen shallow profiles 12" TFT Flat panel display  
 PCI/ISA or PC 104 expansion slot  
 3 Serial port RS-232/485  
 Ethernet port



## RAS/AD and RAS/DY Gas Transmitters



Microprocessor based Gas Transmitters designed to measure Toxic or Flammable gas concentrations with different range %LEL, %Vol., ppm, TLV, TWA.  
RS-485 RTU Modbus serial Interface.  
IP65 Aluminium alloy or Stainless Steel version  
ATEX II 2G EEX-d IIC T6 approved



## DUST/AD and DUST/DY Gas Transmitters




Microprocessor based Gas Transmitters for industrial applications designed to measure Toxic or Flammable gas concentrations with different range %LEL, %Vol., ppm, TLV, TWA.  
RS-485 RTU Modbus serial Interface.  
IP65 Alluminium or Stainless Steel version.



## INTELLIGENT HEAT & FLAME DETECTORS

**TMP2 series:** Electronic fire and overheat detectors.

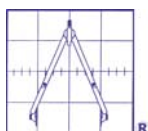


High reliability, dependable long-life.  
Immune from EMI disturbances and virtually eliminates false alarms.  
Different output configurations.  
Static set points and Rate of Rise feature  
Self-diagnosis procedure.  
Wide range of temperature settings. (-20°C to 120°C)  
Two wire technology.  
ATEX  II 2G EEX-d IIC T6 approved  
**EN54-5 CPD Certified**



### Flame Detectors

UV and UV/IR flame detector  
Selective, multi-spectral technology virtually eliminated false alarms  
GRP Housing, 10-28Vdc, Realy output, 4-20mA analogue output  
EN54-10 CPD certified, ATEX zone 2/22 suitable



# EXcetera<sup>®</sup> Fire & Gas Modular Controller



## EXcetera Technical Features

### Controller

EXcetera\_Cnt  
Dual Processor  
Main Processor  
Watch Dog Processor  
Display

Multitasking (16 task max)  
32-bit ColdFire with real-time clock  
RISC 8-bit for redundant safety configuration  
Local 2x20 characters backlit LCD display for diagnostic and maintenance operations

### Communications

Host communication  
Serial Port

Dual Loop Optical fiber Driver  
OptoOPCServer  
FTP  
UDP  
SMTP  
SNMP  
PPP  
MODBUS

TCP  
4 ports RS-485 for modem connection (PPP)  
or for direct connection to serial device  
Open loop or closed loop configurations  
OLE for Process Control  
FTP server/client file system  
Streaming  
Email (SMTP client)  
Network management of I/O & variables  
Point to Point protocol for dial-up and radio modem  
Modbus/TCP, RTU Modbus RS-485

### Serial I/O

Modbus devices

Ethernet devices

Max. 32 Devices for single serial port  
For a maximum of 256 Analogue inputs and 199 Digital Outputs  
Unlimited

### Local I/O

4 Analogue Inputs  
6 Opto coupled Digital Inputs  
7 Free contacts Relays Outputs  
1 Analogue Output

4-20 mA or 0-5 Vdc  
0-5 / 0-30 Vdc  
SPDT 5A at 110 Vac  
0-5 Vdc or 4-20 mA

### Power Supply

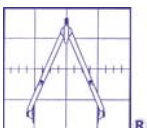
Built-in Battery backup circuit

16 Vac or 24 Vdc  
7.2 A/h max.

DISTRIBUTED BY:

Copyright Oggioni s.a.s.

Copyright Oggioni s.a.s.



**OGGIONI s.a.s.** Via Lavoratori Autobianchi, 1 - P.T.B. Edif.13/O - 20832 Desio (MB) Italy  
Tel.+39 0362 995062 Fax. +39 0362 622531 e-mail [info@oggionisas.com](mailto:info@oggionisas.com) [www.oggionisas.com](http://www.oggionisas.com)